



International Cancer Genome Consortium (ICGC)  
Determining Molecular Mechanisms in Malignant Lymphoma by Sequencing  
(Germinal Center Derived B-Cell Lymphomas) (ICGC MMML-Seq)

UNIVERSITÄT LEIPZIG

# DNA Methylation in Splicing Regulation

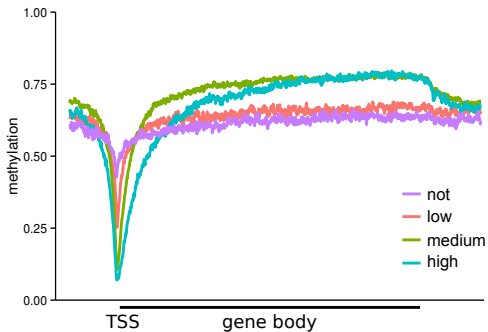
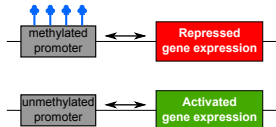
**Helene Kretzmer**

Bioinformatics University of Leipzig

Bled 2016

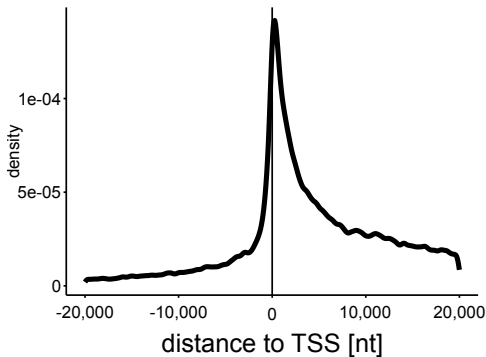
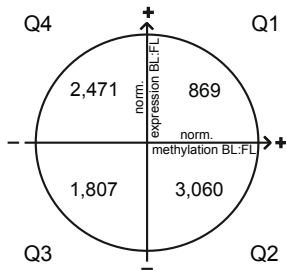


# Impact on gene expression



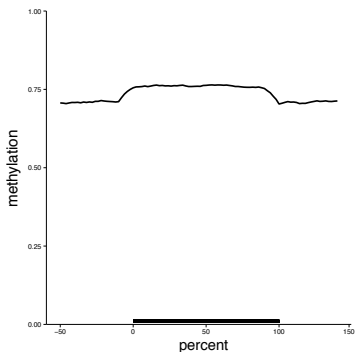
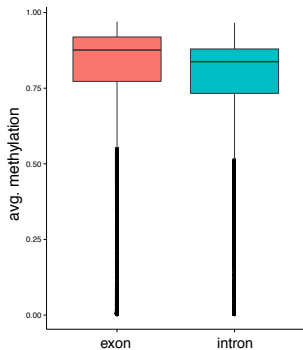


# Correlation of methylation and expression

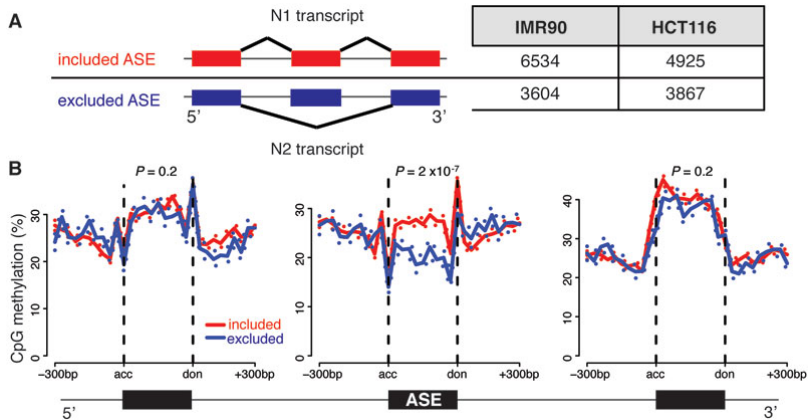




# Intron - Exon methylation

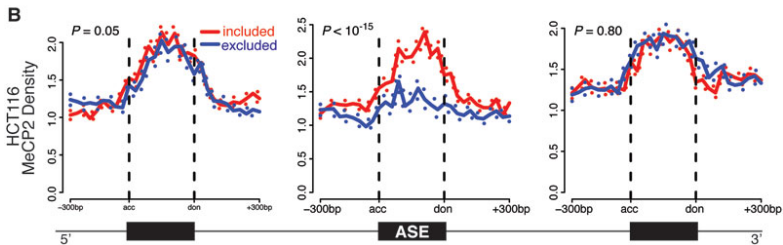


# Alternatively spliced exons (ASE)





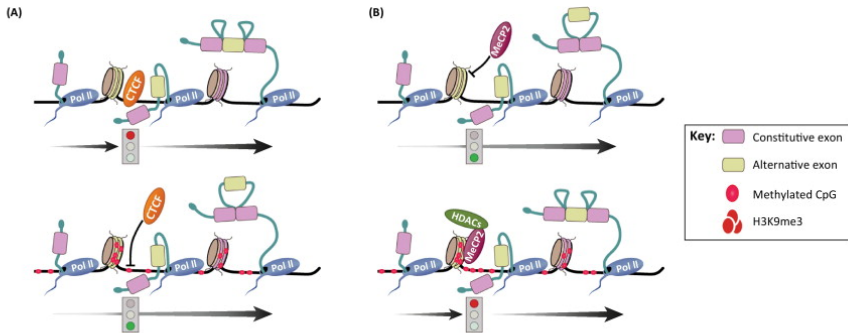
## MeCP2 binding



Cell Research 23 (11): 1256–69



# Link of methylation and alternative splicing





International Cancer Genome Consortium (ICGC)  
Determining Molecular Mechanisms in Malignant Lymphoma by Sequencing  
(Germinal Center Derived B-Cell Lymphomas) (ICGC MMML-Seq)

UNIVERSITÄT LEIPZIG

# Acknowledgement

## on behalf of the German ICGC MMML-Seq-Project

- Steve
- Peter
- Berni
- Gero
- ICGC MMML-Seq

SPONSORED BY THE



Federal Ministry  
of Education  
and Research

Verbundprojekt  
der Deutschen Krebshilfe  
"Molekulare Mechanismen  
bei malignen Lymphomen"



in co-operation with

**BLUEPRINT**  
epigenome